

# GENIE® EQUIPMENT SOLUTIONS



Genie®

QUALITY BY DESIGN

LEARN MORE AT [GENIELIFT.COM](http://GENIELIFT.COM)

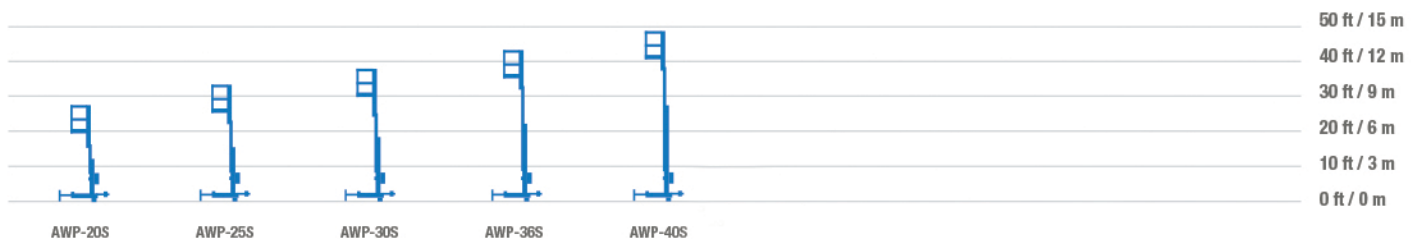
# Specifications

## Aerial Work Platforms

MODEL	WORKING HEIGHT		PLATFORM HEIGHT		WIDTH		LIFT CAPACITY	
	US	METRIC	US	METRIC	US	METRIC	US	METRIC
<b>Aerial Work Platforms</b>								
AWP®-20S	26 ft 1 in	8,12 m	20 ft 1 in	6,12 m	2 ft 5 in	0,74 m	350 lb	159 kg
AWP-25S	30 ft 10 in	9,57 m	24 ft 10 in	7,57 m	2 ft 5 in	0,74 m	350 lb	159 kg
AWP-30S	35 ft 6 in	11,00 m	29 ft 6 in	9,00 m	2 ft 5 in	0,74 m	350 lb	159 kg
AWP-36S	42 ft 5 in	13,10 m	36 ft 5 in	11,10 m	2 ft 5 in	0,74 m	350 lb	159 kg
AWP-40S	46 ft 4 in	14,29 m	40 ft 4 in	12,29 m	2 ft 5 in	0,74 m	300 lb	136 kg

MODEL	WORKING HEIGHT		PLATFORM MAXIMUM HEIGHT (INDOOR)		PLATFORM RESTRICTED (OUTDOOR) HEIGHT		WIDTH		LIFT CAPACITY	
	US	METRIC	US	METRIC	US	METRIC	US	METRIC	US	METRIC
<b>Self-Propelled Aerial Work Platforms (Genie® Runabout™ Family)</b>										
GR™-12	17 ft 4 in	5,45 m	11 ft 4 in	3,5 m	9 ft 1 in	2,8 m	2 ft 5.5 in	0,75 m	500 lb	227 kg
GR-15	20 ft 8 in	6,47 m	14 ft 8 in	4,5 m	11 ft 1 in	3,4 m	2 ft 5.5 in	0,75 m	500 lb	227 kg
GR-20	25 ft 9 in	8,02 m	19 ft 9 in	6,0 m	15 ft 6 in	4,7 m	2 ft 7.5 in	0,80 m	350 lb	159 kg

MODEL	WORKING HEIGHT		PLATFORM HEIGHT		WIDTH		LIFT CAPACITY	
	US	METRIC	US	METRIC	US	METRIC	US	METRIC
<b>Self-Propelled Aerial Work Platform with Jib (Genie Runabout Family)</b>								
GR-26J	32 ft 4 in	9,85 m	25 ft 9 in	7,85 m	3 ft 3 in	0,99 m	500 lb	227 kg



# Specifications

## Material Lifts

MODEL	LIFTING HEIGHT		LIFTING CAPACITY	
	US	METRIC	US	METRIC
<b>Super Hoist™</b>				
GH™ 3.8	12 ft 5.6 in	3,80 m	300 lb	136 kg
GH 5.6	18 ft 4.5 in	5,60 m	250 lb	113 kg

<b>Genie® Lift™</b>				
GL™-4	4 ft 1.5 in	1,26 m	500 lb	227 kg
GL-8	8 ft 3 in	2,51 m	400 lb	182 kg
GL-10	9 ft 10.5 in	3,01 m	350 lb	159 kg
GL-12	12 ft	3,66 m	350 lb	159 kg

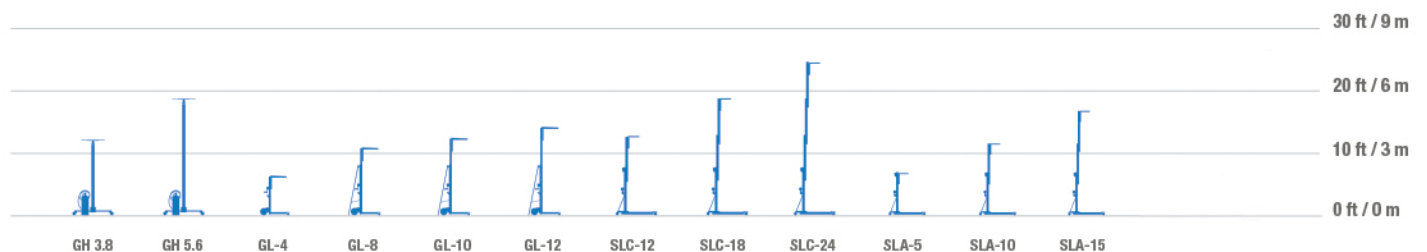
Capacities listed are with a 12 in (30 cm) load center.

<b>Superlift Contractor®</b>				
SLC™-12	12 ft 11 in	3,94 m	650 lb	295 kg
SLC-18	18 ft 6 in	5,64 m	650 lb	295 kg
SLC-24	24 ft	7,32 m	650 lb	295 kg

Capacities listed are with a 14 in (36 cm) load center.

<b>Superlift Advantage®</b>				
SLA™-5	6 ft 7 in	2,0 m	1,000 lb	454 kg
SLA-10	11 ft 5.5 in	3,49 m	1,000 lb	454 kg
SLA-15	16 ft 4 in	4,98 m	800 lb	363 kg
SLA-20	21 ft 2.5 in	6,46 m	800 lb	363 kg
SLA-25	26 ft 0.5 in	7,94 m	650 lb	295 kg

Capacities listed are with a 18 in (46 cm) load center.



# Specifications

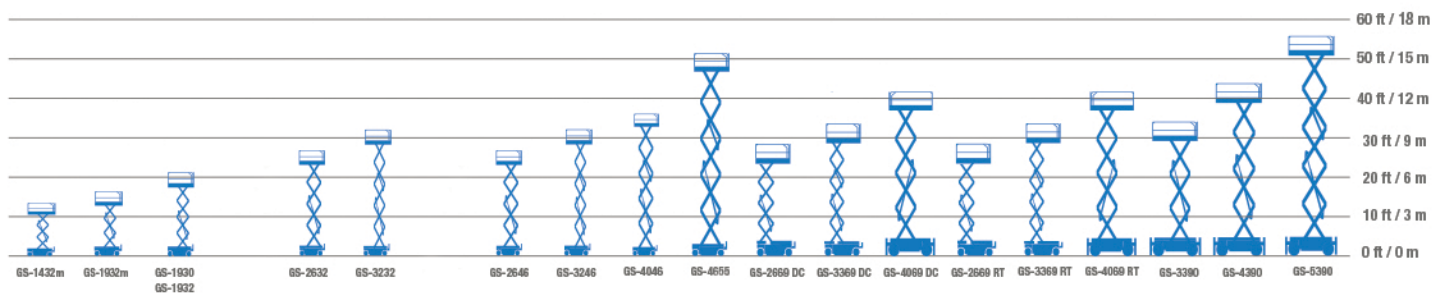
## Self-Propelled Scissor Lifts

MODEL	INDOOR WORKING HEIGHT		OUTDOOR WORKING HEIGHT		WIDTH		LIFT CAPACITY		WEIGHT		OCCUPANCY (IN/OUT)
	US	METRIC	US	METRIC	US	METRIC	US	METRIC	US	METRIC	
<b>Electric E-Drive Scissor Lifts</b>											
GS™-1432m	20 ft 1 in	6.30 m	18 ft	5.66 m	2 ft 8 in	0,81 m	500 lb	227 kg	1,984 lb	900 kg	2 / 1
GS-1932m	24 ft 2 in	7.55 m	21 ft	6.57 m	2 ft 8 in	0,81 m	500 lb	227 kg	2,600 lb	1,179 kg	2 / 1
GS-1930	25 ft 3 in	7,85 m	20 ft 8 in	6,47 m	2 ft 6 in	0,76 m	500 lb	227 kg	3,209 lb	1,456 kg	2 / 1
GS-1932	25 ft 3 in	7,85 m	20 ft 8 in	6,47 m	2 ft 8 in	0,81 m	500 lb	227 kg	2,929 lb	1,329 kg	2 / 1
GS-2632	32 ft 1 in	9,96 m	25 ft	7,79 m	2 ft 8 in	0,81 m	500 lb	227 kg	4,729 lb	2,145 kg	2 / 1
GS-3232	38 ft 1 in	11,78 m	24 ft	7,49 m	2 ft 8 in	0,81 m	500 lb	227 kg	5,367 lb	2,434 kg	2 / 1
GS-2646	32 ft 1 in	9,96 m	25 ft 8 in	7,99 m	3 ft 10 in	1,16 m	1,000 lb	454 kg	4,346 lb	1,971 kg	2 / 1
GS-3246	38 ft 1 in	11,78 m	28 ft	8,71 m	3 ft 10 in	1,16 m	700 lb	318 kg	5,218 lb	2,367 kg	2 / 1
GS-4046	45 ft 2 in	13,94 m	29 ft	9,01 m	3 ft 10 in	1,16 m	770 lb	350 kg	6,871 lb	3,117 kg	3 / 1
GS-4655	51 ft 9 in	15,95 m	27 ft 6 in	8,55 m	55.3 in	1,41 m	770 lb	350 kg	8,160 lb	3,701 kg	3 / 2

MODEL	WORKING HEIGHT		WIDTH		GRADEABILITY*	LIFT CAPACITY		MAX PLATFORM OCCUPANCY (IN/OUT)
	US	METRIC	US	METRIC		US	METRIC	
<b>Rough Terrain Scissor Lifts</b>								
GS-2669 RT/DC	32 ft 2 in	10 m	5 ft 9 in	1,75 m	40%	1500 lb	680 kg	4/4
GS-3369 RT/DC	38 ft 8 in	11,96 m	5 ft 9 in	1,75 m	35%	1000 lb	454 kg	4/2
GS-4069 RT/DC	46 ft 3 in	14,3 m	5 ft 9 in	1,75 m	35%	800 lb	363 kg	3/2
GS-3390	39 ft	12,06 m	7 ft 8 in	2,36 m	50%	2500 lb	1134 kg	7/7
GS-4390	49 ft	15,11 m	7 ft 8 in	2,36 m	50%	1500 lb	680 kg	7/7
GS-5390	59 ft	18,15 m	7 ft 8 in	2,36 m	40%	1500 lb	680 kg	4/4

\*Gradeability applies to driving on slopes "with platform stowed," see operator's manual for details regarding slope ratings.

Gradeability may vary depending on options installed on machine.





# Specifications

## Articulating Z<sup>®</sup>-Boom Lifts

MODEL	WORKING HEIGHT		WIDTH		HORIZONTAL REACH		UP & OVER CLEARANCE		LIFT CAPACITY	
	US	METRIC	US	METRIC	US	METRIC	US	METRIC	US	METRIC
<b>Narrow Articulating Z<sup>®</sup>-Boom Lifts</b>										
Z-30/20N	36 ft	11,14 m	3 ft 11 in	1,19 m	21 ft 5 in	6,53 m	12 ft 8 in	3,86 m	500 lb	227 kg
Z-30/20N RJ	35 ft 2 in	10,89 m	3 ft 11 in	1,19 m	20 ft 6 in	6,25 m	12 ft 8 in	3,86 m	500 lb	227 kg
Z-34/22N	40 ft 6 in	12,52 m	4 ft 10 in	1,47 m	22 ft 3 in	6,78 m	15 ft 3 in	4,65 m	500 lb	227 kg
Z-40/23N	46 ft 5 in	14,32 m	4 ft 11 in	1,50 m	22 ft 8 in	6,91 m	21 ft 3 in	6,48 m	500 lb	227 kg
Z-40/23N RJ	46 ft 5 in	14,32 m	4 ft 11 in	1,50 m	22 ft 8 in	6,91 m	21 ft 3 in	6,48 m	500 lb	227 kg
<b>DC And Hybrid Articulating Z-Boom Lifts</b>										
Z-34/22 DC <sup>(1)</sup>	40 ft 6 in	12,52 m	5 ft 8 in	1,73 m	22 ft 3 in	6,78 m	15 ft	4,57 m	500 lb	227 kg
Z-45/25J DC	51 ft 9 in	15,94 m	5 ft 10.3 in	1,79 m	25 ft 1 in	7,65 m	23 ft 9 in	7,24 m	500 lb	227 kg
Z-45 DC & FE	51 ft 8 in	15,92 m	7 ft 6 in	2,29 m	22 ft 9 in	6,94 m	24 ft 7 in	7,50 m	660 lb	300 kg
Z-60 DC & FE	65 ft 7 in	20,16 m	8 ft 2 in	2,49 m	36 ft 7 in	11,15 m	24 ft 3 in	7,39 m	500 lb	227 kg
<b>Engine-Powered Articulating Z-Boom Lifts</b>										
Z-34/22 IC (2 WD) <sup>(1)</sup>	40 ft 6 in	12,52 m	5 ft 8 in	1,73 m	22 ft 3 in	6,78 m	15 ft	4,57 m	500 lb	227 kg
Z-34/22 IC (4 WD)	40 ft 7 in	12,54 m	6 ft 1 in	1,85 m	22 ft 3 in	6,78 m	15 ft 1 in	4,6 m	500 lb	227 kg
Z-45/25J RT <sup>(2)</sup>	51 ft 6 in	15,86 m	7 ft 6 in	2,29 m	24 ft 8 in	7,52 m	23 ft 7 in	7,14 m	500 lb	227 kg
Z-45 XC <sup>™</sup>	51 ft 6 in	15,86 m	7 ft 6 in	2,29 m	24 ft 9 in	7,55 m	24 ft 5 in	7,44 m	660/1,000 lb	300/454 kg
Z-45 HF <sup>(3)</sup>	51 ft 6 in	15,86 m	8 ft 5 in	2,57 m	24 ft 9 in	7,55 m	24 ft 5 in	7,44 m	600 lb	272 kg
Z-62/40 <sup>(4)</sup>	67 ft 11 in	20,87 m	8 ft 2 in	2,49 m	40 ft 5 in	12,42 m	25 ft 7 in	7,8 m	500 lb	227 kg
Z-80/60	84 ft	25,77 m	8 ft 2 in	2,49 m	60 ft	18,29 m	29 ft	8,83 m	500 lb	227 kg
ZX <sup>™</sup> -135/70	141 ft	43,15 m	8 ft 2 in*	2,49 m*	69 ft 9 in	21,26 m	75 ft 6 in	23,01 m	600 lb	272 kg

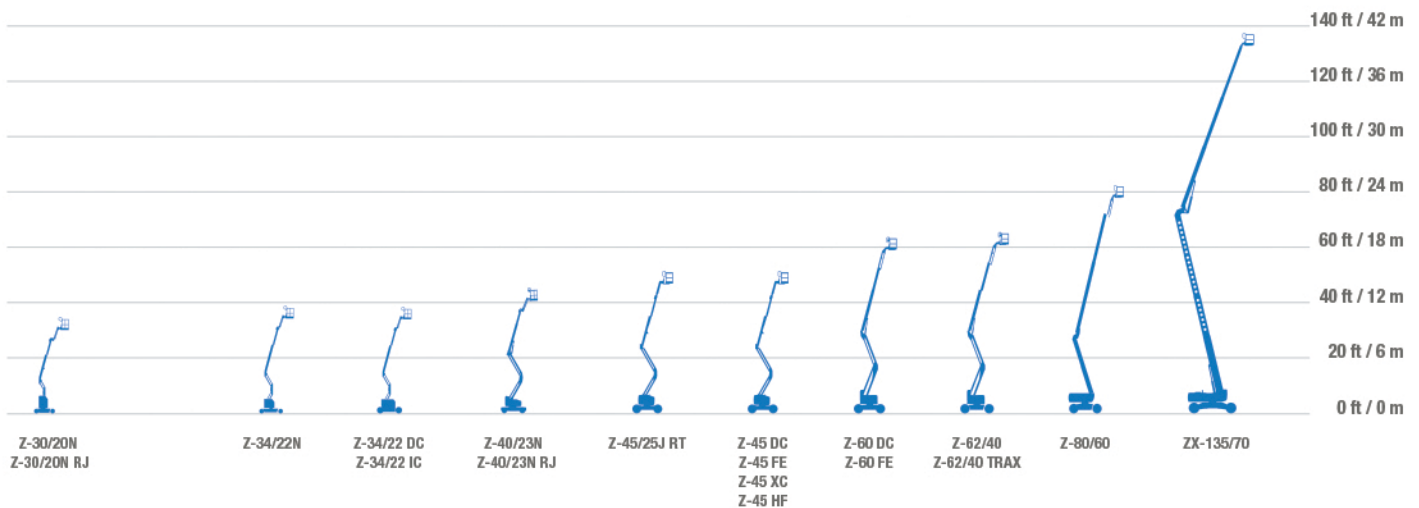
\*Axles retracted

<sup>(1)</sup> This product is only available in ANSI

<sup>(2)</sup> This product is only available in EMEARI and China

<sup>(3)</sup> High Flotation wheels configuration only available for ANSI

<sup>(4)</sup> This product is also available on TraX (4 independent tracked wheels configuration)



# Specifications

## Telescopic S<sup>®</sup>-Boom Lifts

MODEL	WORKING HEIGHT		WIDTH		HORIZONTAL REACH		LIFT CAPACITY	
	US	METRIC	US	METRIC	US	METRIC	US	METRIC
<b>J Series Telescopic S<sup>®</sup>-Boom Lifts</b>								
<b>S-60 J<sup>(1)</sup></b>	66 ft 10 in	20,5 m	8 ft 2 in	2,49 m	40 ft 6 in	12,3 m	660 lb	300 kg
<b>S-80 J<sup>(1)</sup></b>	86 ft 5 in	26,5 m	8 ft 2 in	2,49 m	54 ft 9 in	16,69 m	660 lb	300 kg
<b>Stick Telescopic S-Boom Lifts</b>								
<b>S-40 XC<sup>(1)(2)</sup></b>	45 ft 6 in	13,87 m	8 ft 2 in	2,49 m	31 ft 1 in	9,74 m	660/1,000 lb	300/454 kg
<b>S-40 HF<sup>(3)</sup></b>	45 ft 6 in	13,87 m	8 ft 5 in	2,55 m	28 ft 11 in	8,81 m	600 lb	272 kg
<b>S-45 XC<sup>(1)</sup></b>	50 ft 6 in	15,39 m	8 ft 2 in	2,49 m	36 ft 2 in	11,02 m	660/1,000 lb	300/454 kg
<b>S-45 HF<sup>(3)</sup></b>	50 ft 6 in	15,39 m	8 ft 5 in	2,55 m	34 ft	10,36 m	600 lb	272 kg
<b>S-60 XC<sup>(1)(2)</sup></b>	66 ft	20,29 m	8 ft 2 in	2,49 m	48 ft 7 in	14,80 m	660/1,000 lb	300/454 kg
<b>S-60 HF<sup>(3)</sup></b>	66 ft 2 in	20,33 m	8 ft 5 in	2,55 m	46 ft 7 in	14,21 m	660/1,000 lb	300/454 kg
<b>S-65 XC<sup>(1)</sup></b>	71 ft	21,81 m	8 ft 2 in	2,49 m	54 ft 2 in	16,51 m	660/1,000 lb	300/454 kg
<b>S-65 HF<sup>(3)</sup></b>	71 ft 2 in	21,86 m	8 ft 5 in	2,55 m	51 ft 2 in	15,60 m	660/1,000 lb	300/454 kg
<b>S-80 XC<sup>(2)</sup></b>	86 ft	26,21 m	8 ft 2 in	2,49 m	68 ft 6 in	20,88 m	660/1,000 lb	300/454 kg
<b>S-80 HF<sup>(3)</sup></b>	86 ft	26,21 m	8 ft 6 in	2,59 m	68 ft 6 in	20,88 m	660/1,000 lb	300/454 kg
<b>S-85 XC</b>	91 ft	27,74 m	8 ft 2 in	2,49 m	74 ft 6 in	22,71 m	660/1,000 lb	300/454 kg
<b>S-85 HF<sup>(3)</sup></b>	91 ft	27,74 m	8 ft 6 in	2,59 m	72 ft 6 in	22,10 m	660/1,000 lb	300/454 kg
<b>Super Telescopic S-Boom Lifts</b>								
<b>SX<sup>™</sup>-105 XC</b>	111 ft	34 m	8 ft 2 in*	2,49 m*	80 ft	24,38 m	660/1,000 lb**	300/454 kg**
<b>SX-125 XC</b>	131 ft	40,1 m	8 ft 2 in*	2,49 m*	80 ft	24,38 m	660/1,000 lb**	300/454 kg**
<b>SX-135 XC</b>	141 ft	43,15 m	8 ft 2 in*	2,49 m*	90 ft	27,43 m	660/1,000 lb**	300/454 kg**
<b>SX-150</b>	158 ft	48,33 m	8 ft 2 in*	2,49 m*	80 ft	24,38 m	750 lb	340 kg
<b>SX-180</b>	186 ft	56,86 m	8 ft 2 in*	2,49 m*	80 ft	24,38 m	750 lb	340 kg

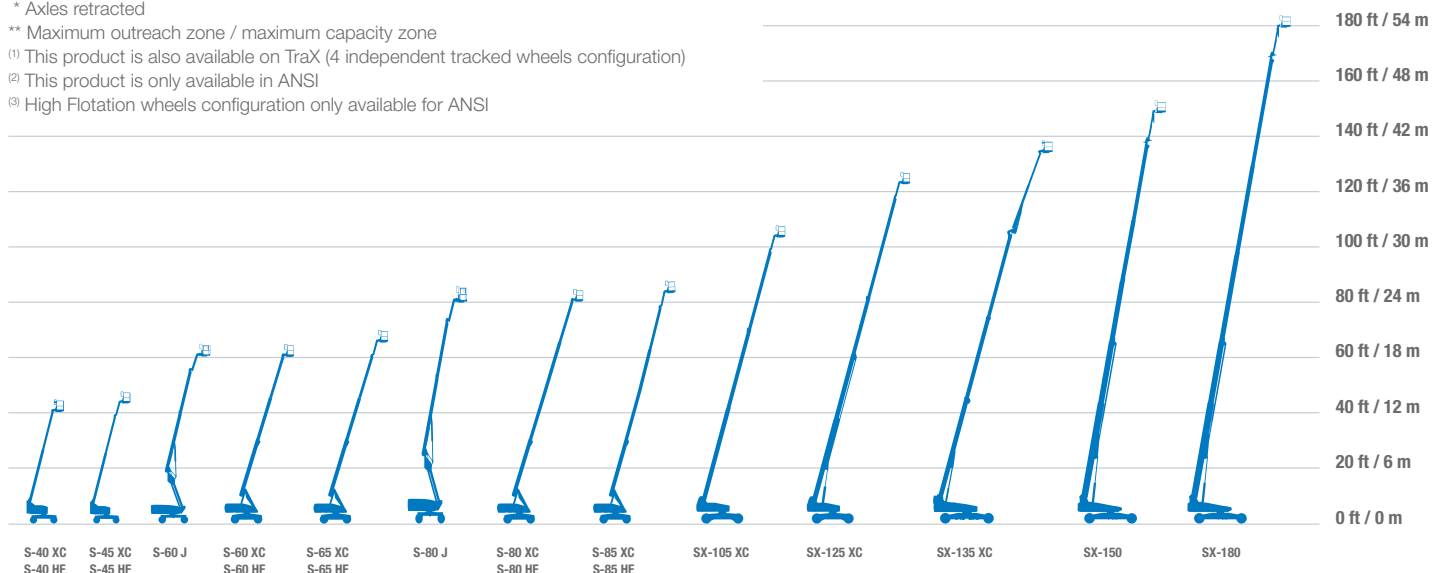
\* Axles retracted

\*\* Maximum outreach zone / maximum capacity zone

<sup>(1)</sup> This product is also available on TraX (4 independent tracked wheels configuration)

<sup>(2)</sup> This product is only available in ANSI

<sup>(3)</sup> High Flotation wheels configuration only available for ANSI



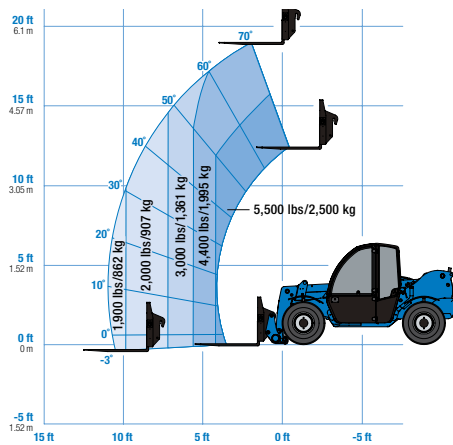
# Specifications Telehandlers

MODEL	MAX LIFT HEIGHT		MAX FORWARD REACH		MAXIMUM LIFT CAPACITY		CAPACITY AT MAX HEIGHT		CAPACITY AT MAX REACH		OUTRIGGERS/ STABILIZERS
	US	METRIC	US	METRIC	US	METRIC	US	METRIC	US	METRIC	
<b>Genie® Telehandlers</b>											
GTH™-5519 <sup>(1)</sup>	18 ft 10 in	5,74 m	11 ft 3 in	3,43 m	5,500 lb	2,495 kg	4,400 lb	1,996 kg	1,900 lb	862 kg	NO
GTH-636 <sup>(1)</sup>	36 ft	10,97 m	21 ft 11 in	6,68 m	6,000 lb	2,722 kg	5,000 lb	2,268 kg	1,500 lb	680 kg	NO
GTH-844 <sup>(1)</sup>	43 ft 10 in	13,36 m	28 ft 2 in	8,59 m	8,000 lb	3,629 kg	6,000 lb	2,722 kg	2,000 lb	907 kg	NO
GTH-1056 <sup>(1)</sup>	56 ft 7 in	17,25 m	42 ft	12,80 m	10,000 lb	4,536 kg	5,000 lb	2,268 kg	3,000 lb	1,361 kg	YES
GTH-1256 <sup>(1)</sup>	56 ft	17,07 m	42 ft	12,80 m	12,000 lb	5,450 kg	7,000 lb	3,250 kg	3,500 lb	1,588 kg	YES

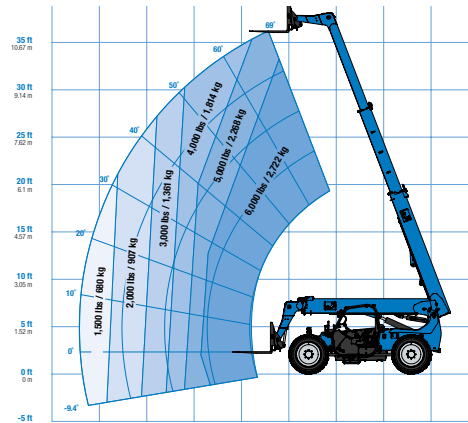
<sup>(1)</sup> Only available in ANSI standard

## LOAD CHARTS

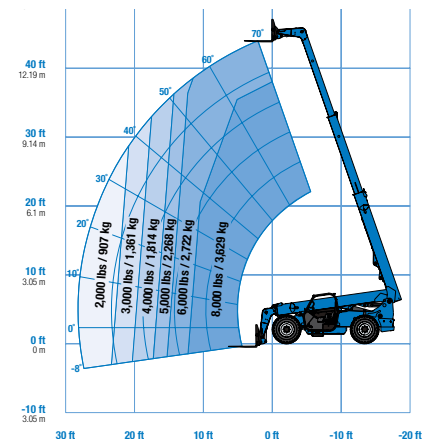
GTH-5519



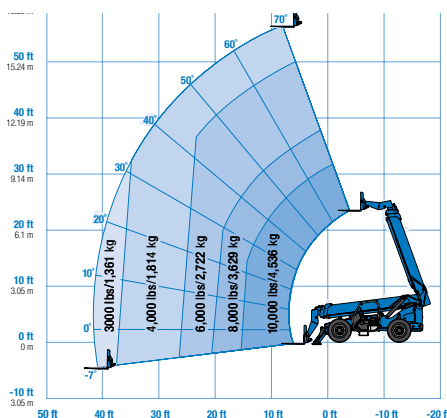
GTH-636



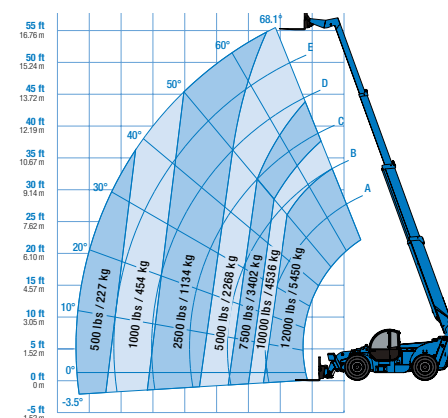
GTH-844



GTH-1056 (stabilizers down)



GTH-1256 (stabilizers down)



## Worldwide Manufacturing And Distribution

Australia · Brazil · Caribbean · Central America · China · France · Germany · Italy · Japan · Korea  
Mexico · Southeast Asia · Spain · Sweden · United Arab Emirates · United Kingdom · United States

6464 185th Ave. NE, Redmond, WA 98052

Toll Free in USA/Canada **+1 (800) 536-1800** · Telephone **+1 (425) 881-1800** · Fax **+1 (425) 883-3475**

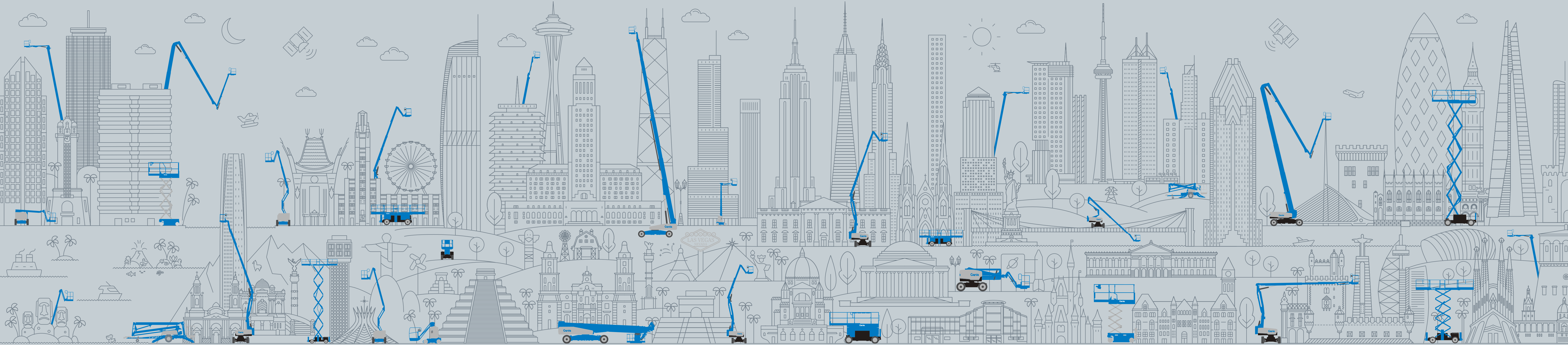
Effective Date: July, 2022. Product specifications and prices are subject to change without notice or obligation. The photographs and/or drawings in this document are for illustrative purposes only. Refer to the appropriate Operator's Manual for instructions on the proper use of this equipment. Failure to follow the appropriate Operator's Manual when using our equipment or to otherwise act irresponsibly may result in serious injury or death. The only warranty applicable to our equipment is the standard written warranty applicable to the particular product and sale and we make no other warranty, express or implied. Products and services listed may be trademarks, service marks or trade names of Terex Corporation and/or their subsidiaries in the USA and many other countries. Genie and Quality By Design are trademarks of Terex Corporation or its subsidiaries. © 2022 Terex Aerial Work Platforms.

**Genie**®

**QUALITY** BY  **DESIGN**

[LEARN MORE AT GENIELIFT.COM](https://www.genielift.com)





# FULL FAMILY SPECIFICATIONS 2024



## Material Lifts

MODEL	LIFTING HEIGHT		LIFTING CAPACITY	
	US	METRIC	US	METRIC
<b>Super Hoist®</b>				
GH™ 3.8	12 ft 5.6 in	3.80 m	350 lb	158 kg
GH 5.6*	18 ft 4.5 in	5.60 m	350 lb	158 kg
<b>Genie® Lift™</b>				
GL™-4	5 ft 11 in	1.80 m	500 lb	227 kg
GL-8	10 ft 0.5 in	3.06 m	400 lb	182 kg
GL-10	11 ft 8 in	3.56 m	350 lb	159 kg
GL-12	13 ft 9.5 in	4.20 m	350 lb	159 kg
<b>Superlift Contractor®</b>				
SLC™-12	12 ft 11 in	3.94 m	650 lb	295 kg
SLC-18	18 ft 6 in	5.64 m	650 lb	295 kg
SLC-24	24 ft	7.32 m	650 lb	295 kg
<b>Superlift Advantage®</b>				
SLA™-5	6 ft 7 in	2.00 m	1,000 lb	454 kg
SLA-10	11 ft 5.5 in	3.49 m	1,000 lb	454 kg
SLA-15	16 ft 4 in	4.98 m	800 lb	363 kg
SLA-20	21 ft 2.5 in	6.46 m	800 lb	363 kg
SLA-25	26 ft 0.5 in	7.94 m	650 lb	295 kg

## Self-Propelled Scissor Lifts

MODEL	MAX. WORKING HEIGHT		WIDTH		LIFT CAPACITY	
	US	METRIC	US	METRIC	US	METRIC
<b>Electric E-Drive Scissor Lifts</b>						
GS™-1432m	20 ft 1 in	6.30 m	2 ft 8 in	0.81 m	500 lb	227 kg
GS-1932m	24 ft 3 in	7.55 m	2 ft 8 in	0.81 m	500 lb	227 kg
GS-1930	25 ft 3 in	7.85 m	2 ft 6.2 in	0.77 m	500 lb	227 kg
GS-1932	25 ft 3 in	7.85 m	2 ft 8.2 in	0.82 m	500 lb	227 kg
GS-2632	32 ft 1 in	9.96 m	2 ft 8.2 in	0.82 m	500 lb	227 kg
GS-3232	38 ft 1 in	11.78 m	2 ft 8.2 in	0.82 m	500 lb	227 kg
GS-2646	32 ft 1 in	9.96 m	3 ft 10 in	1.18 m	1,000 lb	454 kg
GS-3246	38 ft 1 in	11.78 m	3 ft 10 in	1.18 m	700 lb	318 kg
GS-4046	45 ft 2 in	13.94 m	3 ft 10 in	1.18 m	770 lb	350 kg
GS-4655	51 ft 9 in	15.95 m	4 ft 7 in	1.40 m	770 lb	350 kg
<b>Rough Terrain Scissor Lifts</b>						
GS-2669 RT/DC	32 ft 2 in	10.00 m	5 ft 9 in	1.75 m	1,500 lb	680 kg
GS-3369 RT/DC	38 ft 8 in	11.96 m	5 ft 9 in	1.75 m	1,000 lb	454 kg
GS-4069 RT/DC	46 ft 3 in	14.30 m	5 ft 9 in	1.75 m	800 lb	363 kg
GS-3390	39 ft	12.10 m	7 ft 8 in	2.34 m	2,500 lb	1,134 kg
GS-4390	49 ft	15.10 m	7 ft 8 in	2.34 m	1,500 lb	680 kg
GS-5390	59 ft	18.15 m	7 ft 8 in	2.34 m	1,500 lb	680 kg

## Articulating Z<sup>®</sup>-Boom Lifts

MODEL	MAX. WORKING HEIGHT		WIDTH		HORIZONTAL REACH		UP & OVER CLEARANCE		LIFT CAPACITY	
	US	METRIC	US	METRIC	US	METRIC	US	METRIC	US	METRIC
<b>Narrow Articulating Z-Boom Lifts</b>										
Z-30/20N	36 ft	11.14 m	3 ft 11 in	1.19 m	21 ft 5 in	6.53 m	12 ft 8 in	3.86 m	500 lb	227 kg
Z-30/20N RJ	35 ft 2 in	10.89 m	3 ft 11 in	1.19 m	20 ft 6 in	6.25 m	12 ft 8 in	3.86 m	500 lb	227 kg
Z-34/22N	40 ft 6 in	12.52 m	4 ft 10 in	1.47 m	22 ft 3 in	6.78 m	15 ft 3 in	4.65 m	500 lb	227 kg
<b>Electric &amp; Hybrid Articulating Z-Boom Lifts</b>										
Z-45/25J DC & BI-Energy	51 ft 9 in	15.94 m	5 ft 10.3 in	1.79 m	25 ft 1 in	7.65 m	23 ft 9 in	7.24 m	500 lb	227 kg
Z-45 DC & Z-45 FE	51 ft 8 in	15.92 m	7 ft 6 in	2.29 m	22 ft 9 in	6.94 m	24 ft 7 in	7.50 m	660 lb	300 kg
Z-60 DC & Z-60 FE	65 ft 7 in	20.16 m	8 ft 2 in	2.49 m	36 ft 7 in	11.15 m	24 ft 3 in	7.39 m	500 lb	227 kg
<b>Engine-Powered Articulating Z-Boom Lifts</b>										
Z-34/22 IC	40 ft 7 in	12.54 m	6 ft 1 in	1.85 m	22 ft 3 in	6.78 m	15 ft 1 in	4.60 m	500 lb	227 kg
Z-45/25J RT	51 ft 6 in	15.86 m	7 ft 6 in	2.29 m	24 ft 8 in	7.52 m	23 ft 7 in	7.14 m	500 lb	227 kg
Z-45 XC™	51 ft 6 in	15.86 m	7 ft 6 in	2.29 m	24 ft 9 in	7.55 m	24 ft 5 in	7.44 m	660/1,000 lb	300/454 kg
Z-51/30J RT	57 ft 8 in	17.59 m	7 ft 6 in	2.29 m	30 ft 9 in	9.37 m	24 ft 3 in	7.39 m	500 lb	227 kg
Z-62/40 & Z-62/40 TRAX	67 ft 11 in	20.87 m	8 ft 2 in	2.49 m	40 ft 9 in	12.42 m	25 ft 7 in	7.80 m	500 lb	227 kg
Z-80/60	84 ft	25.77 m	8 ft 2 in	2.49 m	60 ft	18.29 m	29 ft	8.83 m	500 lb	227 kg
ZX™-135/70	141 ft	43.15 m	8 ft 2 in*	2.49 m*	69 ft 9 in	21.26 m	75 ft 6 in	23.01 m	600 lb	272 kg

\*Axles retracted

## Aerial Work Platforms

MODEL	MAX. WORKING HEIGHT		WIDTH		LIFT CAPACITY	
	US	METRIC	US	METRIC	US	METRIC
<b>Aerial Work Platforms</b>						
AWP®-20S	26 ft 1 in	8.12 m	2 ft 5 in	0.74 m	350 lb	159 kg
AWP-25S	30 ft 9 in	9.54 m	0.74 m	0.74 m	350 lb	159 kg
AWP-30S	35 ft 6 in	11.00 m	2 ft 5 in	0.74 m	350 lb	159 kg
AWP-36S	42 ft 5 in	13.10 m	2 ft 5 in	0.74 m	350 lb	159 kg
AWP-40S	46 ft 3 in	14.30 m	2 ft 5 in	0.74 m	300 lb	136 kg
<b>Self-Propelled Aerial Work Platforms (Genie® Runabout™ Family)</b>						
GR™-12	17 ft 4 in	5.45 m	2 ft 5.5 in	0.75 m	500 lb	227 kg
GR-15	20 ft 8 in	6.47 m	2 ft 5.5 in	0.75 m	500 lb	227 kg
GR-20	25 ft 9 in	8.02 m	2 ft 7.5 in	0.80 m	350 lb	159 kg
<b>Self-Propelled Aerial Work Platform with Jib (Genie Runabout Family)</b>						
GR-20J	24 ft 8 in	7.70 m	3 ft 3 in	0.99 m	440 lb	200 kg
GR-26J	31 ft 11 in	9.90 m	3 ft 3 in	0.99 m	440 lb	200 kg

## Telescopic S<sup>®</sup>-Boom Lifts

MODEL	MAX. WORKING HEIGHT		WIDTH		HORIZONTAL REACH		LIFT CAPACITY	
	US	METRIC	US	METRIC	US	METRIC	US	METRIC
<b>J Series Telescopic S-Boom Lifts</b>								
S-60 J	66 ft 10 in	20.50 m	8 ft 2 in	2.49 m	40 ft 6 in	12.3 m	660 lb	300 kg
S-80 J & S-80 J TRAX	86 ft 5 in	26.51 m	8 ft 2 in/8 ft 4 in	2.49 m/2.54 m	54 ft 9 in	16.69 m	660 lb	300 kg
<b>Stick Telescopic S-Boom Lifts</b>								
S-45 XC & S-45 TRAX	50 ft 6 in	15.56 m	8 ft 2 in/8 ft 1 in	2.49 m/2.46 m	36 ft 2 in	11.02 m	660/1,000 lb	300/454 kg
S-60 DC	67 ft 2 in	20.60 m	8 ft 2 in	2.49 m	40 ft 6 in	12.30 m	660 lb	300 kg
S-60 FE	67 ft 2 in	20.60 m	8 ft 2 in	2.49 m	40 ft 6 in	12.30 m	660 lb	300 kg
S-65 XC & S-65 TRAX	71 ft	21.81 m	8 ft 2 in/8 ft 6 in	2.49 m/2.58 m	54 ft 2 in	16.51 m	660/1,000 lb	300/454 kg
S-85 XC	91 ft	27.91 m	8 ft 2 in	2.49 m	74 ft 6 in	22.71 m	660/1,000 lb	300/454 kg
<b>Super Telescopic S-Boom Lifts</b>								
SX™-105 XC™	111 ft	34 m	8 ft 2 in*	2.49 m*	80 ft	24.38 m	660/1,000 lb	300/454 kg
SX-125 XC	131 ft	40.10 m	8 ft 2 in*	2.49 m*	80 ft	24.38 m	660/1,000 lb	300/454 kg
SX-135 XC	141 ft	43.15 m	8 ft 2 in*	2.49 m*	90 ft	27.43 m	660/1,000 lb	300/454 kg
SX-150	158 ft	48.33 m	8 ft 2 in*	2.49 m*	80 ft	24.38 m	750 lb	340 kg
SX-180	186 ft	56.86 m	8 ft 2 in*	2.49 m*	80 ft	24.38 m	750 lb	340 kg

\*Axles retracted